
PERMIT ATTACHMENT

APPENDIX III

SITE DIAGRAMS

This document was not altered from the April
2016 Application.

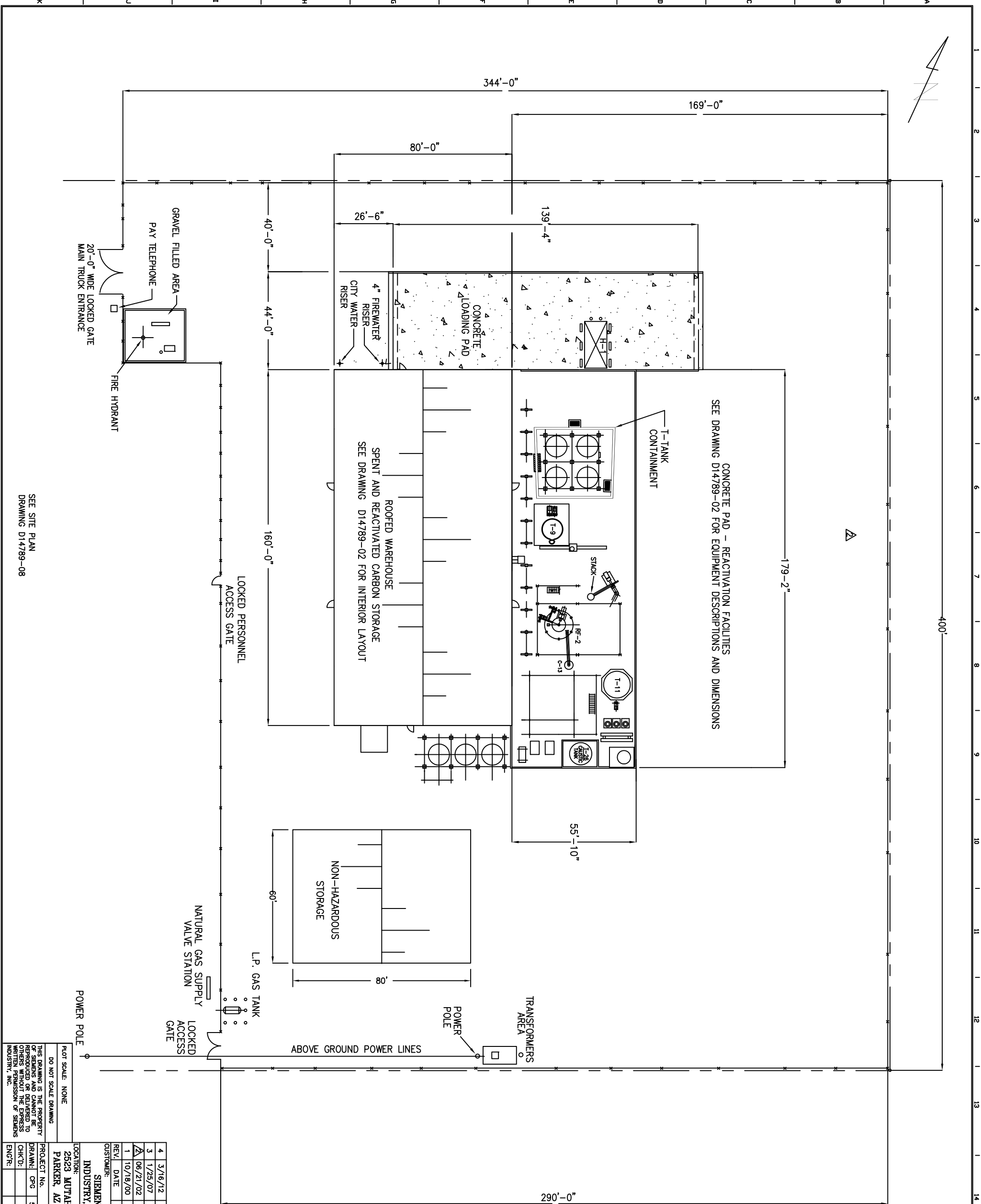
September 2018

APPENDIX III
SITE DIAGRAMS
FOR
SIEMENS INDUSTRY, INC.
PARKER REACTIVATION FACILITY
PARKER, ARIZONA

Revision 1
April 2012

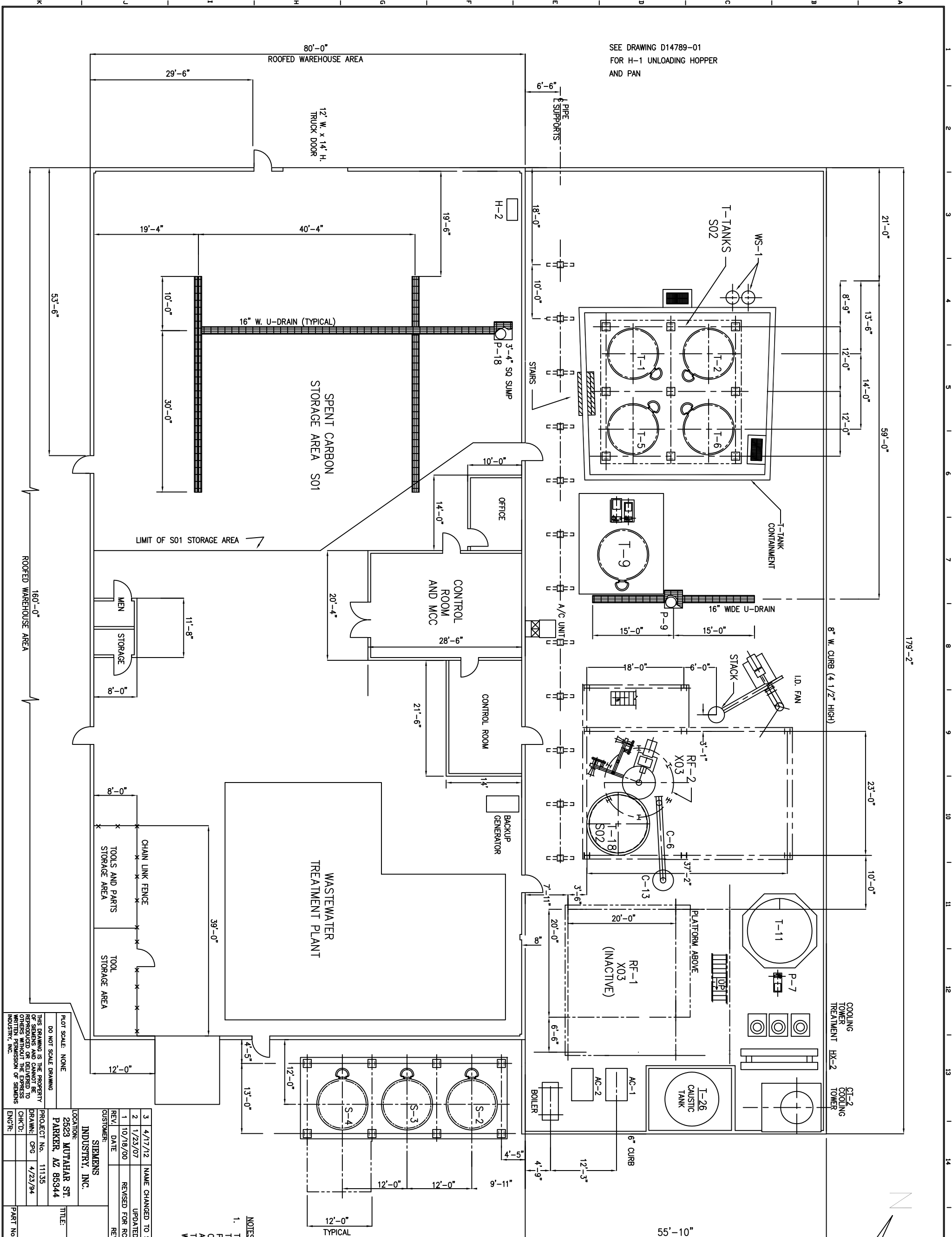
TABLE OF CONTENTS

<u>DRAWING NO.</u>	<u>DESCRIPTION</u>
D14789-01	Reactivation Facility Site Plan
D14789-02	Reactivation Facility Equipment Arrangement
D14789-03	Reactivation Facility Site View Overall Arrangements
D14789-04	Reactivation Facility Overall Arrangements
D14789-08	Reactivation Facility Site Plan
1541-CM-001	Site Contour Map
1478-P-001	Plan Views
1478-P-002	Plan Views
1478-P-003	Plan Views
1478-P-004	Elevation Looking North
1478-P-005	Elevation Looking West



NOTES:
 1. THIS DRAWING INCLUDES COMPONENTS OF THE FACILITY THAT ARE EXEMPT FROM PERMITTING UNDER VARIOUS PROVISIONS OF RCRA. DATA RELATED TO THESE COMPONENTS IS PROVIDED FOR INFORMATIONAL PURPOSES AND EASE OF REVIEW ONLY, AND THEY ARE NOT INTENDED TO BECOME REGULATED COMPONENTS OF THE HAZARDOUS WASTE FACILITY.

4	3/16/12	NAME CHANGED TO SIEMENS INDUSTRY, INC.	JBE	KEM
3	1/25/07	UPDATED FOR PERMIT SUBMITTAL	JBE	KEM
2	06/21/02	REMOVED DUMPSTER PAD	OPG	KEM
1	10/18/00	REVISED FOR RORA PART B PERMIT APPLICATION	JBE	---
REV. DATE		REVISION DESCRIPTION	DRAWN	CHK'D ENGR
CUSTOMER: SIEMENS INDUSTRY, INC.				
LOCATION: 2523 MUTAHAR ST. PARKER, AZ 85344				
PROJECT No. PARKER, AZ 85344				
DRAWN: OPG 5/16/94				
CHK'D:				
ENGR:				
TITLE: SIEMENS INDUSTRY, INC. Reactivation Facility Parker, AZ			PART No.	
PROJECT No. PARKER, AZ 85344			DWG No. D14789-01	
DRAWN: OPG 5/16/94			REV 4	
CHK'D:				
ENGR:				



SEE DRAWING D14789-01
FOR H-1 UNLOADING HOPPER
AND PAN

SPENT CARBON
STORAGE AREA S01

WASTEWATER
TREATMENT PLANT

CONTROL ROOM
AND MCC

CONTROL ROOM

BACKUP
GENERATOR

MEN
STORAGE

TOOLS AND PARTS
STORAGE AREA

TOOL
STORAGE AREA

LIMIT OF S01 STORAGE AREA

TYPICAL

- EQUIPMENT LIST:**
- C-4 TRANSPORTER
 - C-6 PRODUCT COOLING SCREW
 - C-13 TRANSPORTER
 - CT-2 COOLING TOWER
 - H-1 CARBON HOPPER
 - H-2 CARBON HOPPER
 - HX-2 HEAT EXCHANGER
 - P-4 RECYCLE WATER PUMP
 - P-5 RECYCLE WATER PUMP
 - P-7 PROCESS WW PUMP
 - P-9 SUMP PUMP
 - P-18 SUMP PUMP
 - S-2 CARBON STORAGE TANK
 - S-3 CARBON STORAGE TANK
 - S-4 CARBON STORAGE TANK
 - T-1 SPENT CARBON STORAGE TANK
 - T-2 SPENT CARBON STORAGE TANK
 - T-5 SPENT CARBON STORAGE TANK
 - T-6 SPENT CARBON STORAGE TANK
 - T-9 RECYCLE WATER STORAGE TANK
 - T-11 PROCESS WW STORAGE TANK
 - T-18 FURNACE FEED TANK
 - T-26 CAUSTIC TANK
 - WS-1 ACTIVATED CARBON ADSORBER

NOTES:

- THIS DRAWING INCLUDES COMPONENTS OF THE FACILITY THAT ARE EXEMPT FROM PERMITTING UNDER VARIOUS PROVISIONS OF RCRA. COMPONENTS IS PROVIDED FOR INFORMATIONAL PURPOSES AND EASE OF REVIEW ONLY, AND THEY ARE NOT INTENDED TO BECOME REGULATED COMPONENTS OF THE HAZARDOUS WASTE FACILITY.

PLOT SCALE: NONE
DO NOT SCALE DRAWING

THIS DRAWING IS THE PROPERTY OF SIEMENS AND CANNOT BE REPRODUCED OR DELIVERED TO OTHERS WITHOUT THE EXPRESS WRITTEN PERMISSION OF SIEMENS INDUSTRY, INC.

3	4/17/12	NAME CHANGED TO SIEMENS INDUSTRY, INC., MOVE WS-1	JBE	KEM
2	1/23/07	UPDATED FOR PERMIT SUBMITTAL	JBE	KEM
1	10/18/00	REVISED FOR RCRA PART B PERMIT APPLICATION	JBE	---
REV.	DATE	REVISION DESCRIPTION	DRAWN	CHK'D
ENGR.				ENGR

CUSTOMER: SIEMENS INDUSTRY, INC.

LOCATION: 2523 MUTJAHAR ST. PARKER, AZ 85344

PROJECT No. 11135

DRAWN: CPG 4/23/94

CHK'D:

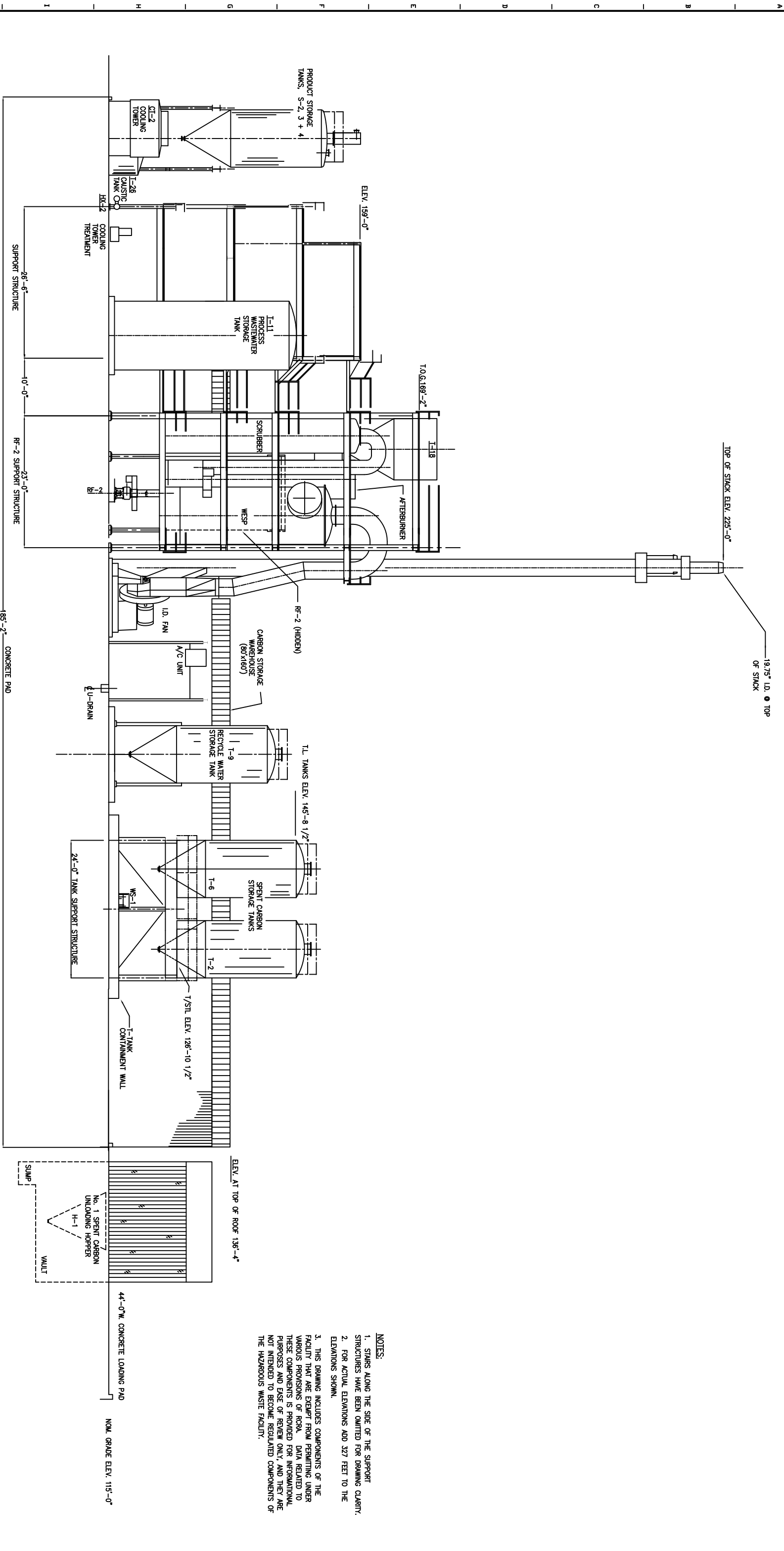
ENGR:

SIEMENS INDUSTRY, INC.
Parker, AZ

**REACTIVATION FACILITY
EQUIPMENT ARRANGEMENT**

PART No. _____

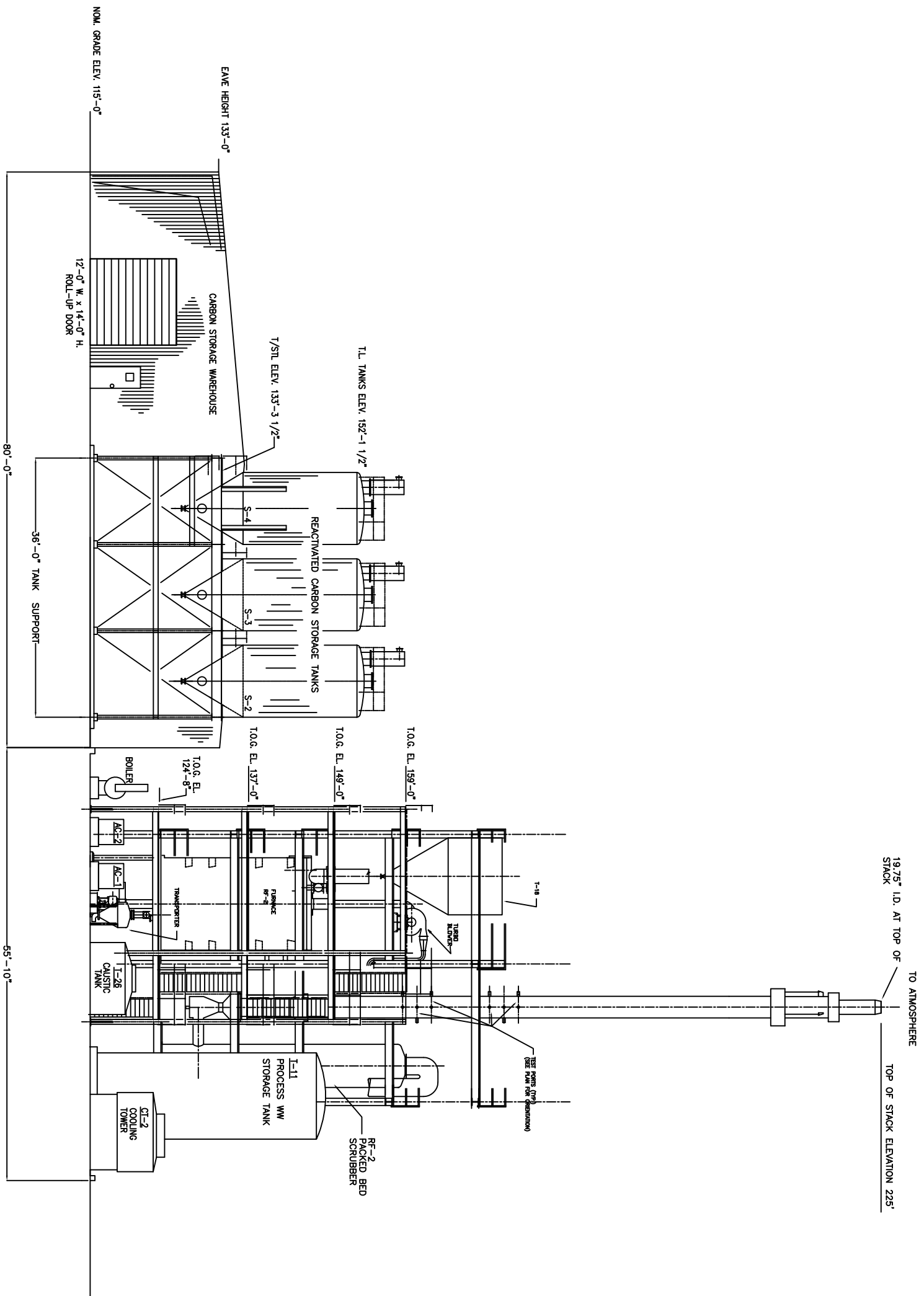
DWG No. **D14789-02** REV. 3



OVERALL SITE VIEW LOOKING SOUTHWEST

- NOTES:**
1. STAIRS ALONG THE SIDE OF THE SUPPORT STRUCTURES HAVE BEEN OMITTED FOR DRAWING CLARITY.
 2. FOR ACTUAL ELEVATIONS ADD 327 FEET TO THE ELEVATIONS SHOWN.
 3. THIS DRAWING INCLUDES COMPONENTS OF THE FACILITY THAT ARE EXEMPT FROM PERMITTING UNDER VARIOUS PROVISIONS OF RCRA. DATA RELATED TO THESE COMPONENTS IS PROVIDED FOR INFORMATIONAL PURPOSES AND USE OF REVIEW ONLY AND THEY ARE NOT INTENDED TO BECOME REGULATED COMPONENTS OF THE HAZARDOUS WASTE FACILITY.

3	3/16/12	NAME CHANGED TO SIEMENS INDUSTRY, INC.	JBE	KEM
2	1/18/07	UPDATED FOR PERMIT SUBMITTAL	JBE	KEM
1	7/24/02	REVISED FOR RCRA PART B PERMIT APPLICATION	OPG	KEM
REV.	DATE	REVISION DESCRIPTION	DRAWN	CHK'D
CUSTOMER: SIEMENS INDUSTRY, INC. LOCATION: 2523 MUTAHAR ST. PARKER, AZ 85344 TITLE: REACTIVATION FACILITY SITE VIEW OVERALL ARRANGEMENTS				
PLT SCALE:	NONE			
DO NOT SCALE DRAWING				
THIS DRAWING IS THE PROPERTY OF SIEMENS, AND CANNOT BE REPRODUCED OR DELIVERED TO OTHERS WITHOUT THE EXPRESS WRITTEN PERMISSION OF SIEMENS INDUSTRY, INC.				
ENG'R:				
PART No.		DWG No. D14789-03	REV. 3	



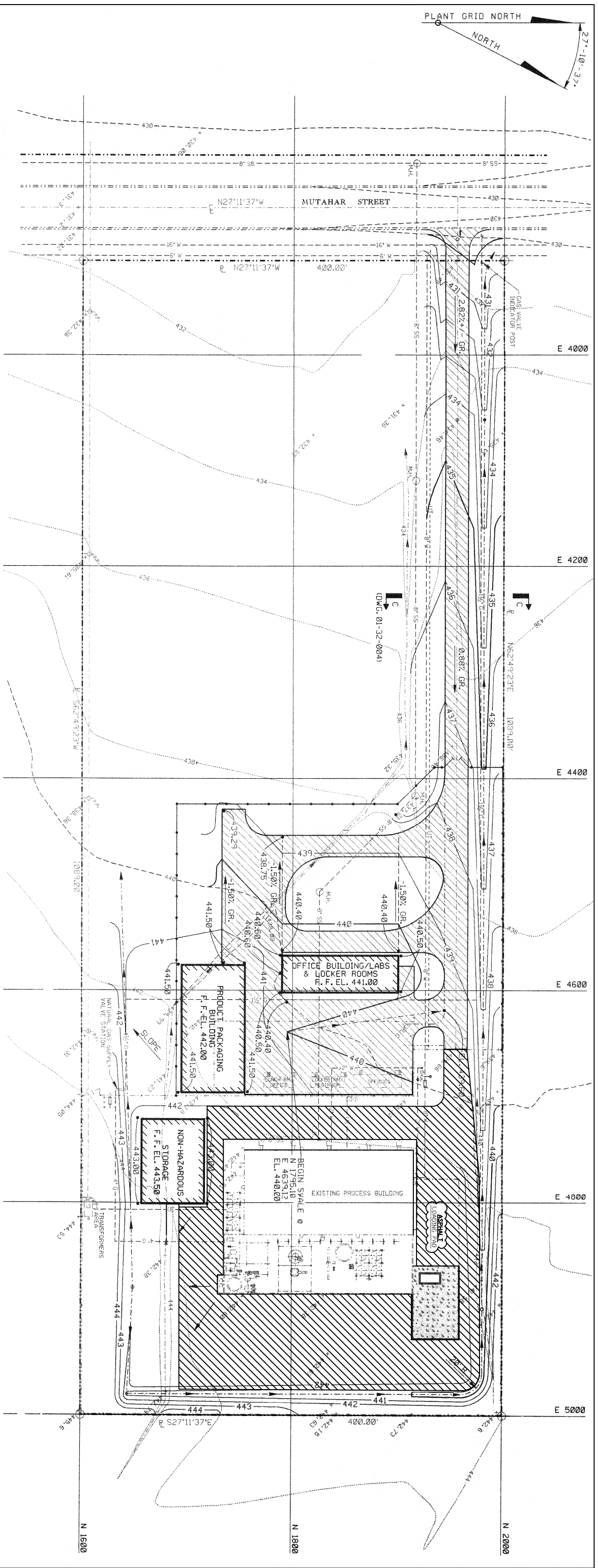
OVERALL SITE VIEW LOOKING NORTHWEST

- NOTES:
1. THIS DRAWING INCLUDES COMPONENTS OF THE FACILITY THAT ARE EXEMPT FROM PERMITTING UNDER VARIOUS PROVISIONS OF RCRA. DATA RELATED TO THESE COMPONENTS IS PROVIDED FOR INFORMATIONAL PURPOSES AND EASE OF REVIEW ONLY, AND THEY ARE NOT INTENDED TO BECOME REGULATED COMPONENTS OF THE HAZARDOUS WASTE FACILITY.
 2. FOR ACTUAL ELEVATIONS ADD 327 FEET TO THE ELEVATIONS SHOWN.

REV.	DATE	REVISION DESCRIPTION	DRAWN	CHK'D	ENGR
3	3/16/12	NAME CHANGED TO SIEMENS INDUSTRY, INC.	JBE	KEM	
2	1/16/07	UPDATED FOR PERMIT SUBMITTAL	JBE	KEM	
1	7/16/02	REVISED FOR RCRA PART B PERMIT APPLICATION	STA	KEM	

CUSTOMER:	SIEMENS INDUSTRY, INC.
LOCATION:	2523 MUTAHAR ST. PARKER, AZ 85344
PROJECT No.	11135
DRAWN:	OPG
CHK'D:	4/21/94
ENGR:	

TITLE:	SIEMENS INDUSTRY INC. Parker, AZ
PART No.	
DWG No.	D14789-04
REV.	3

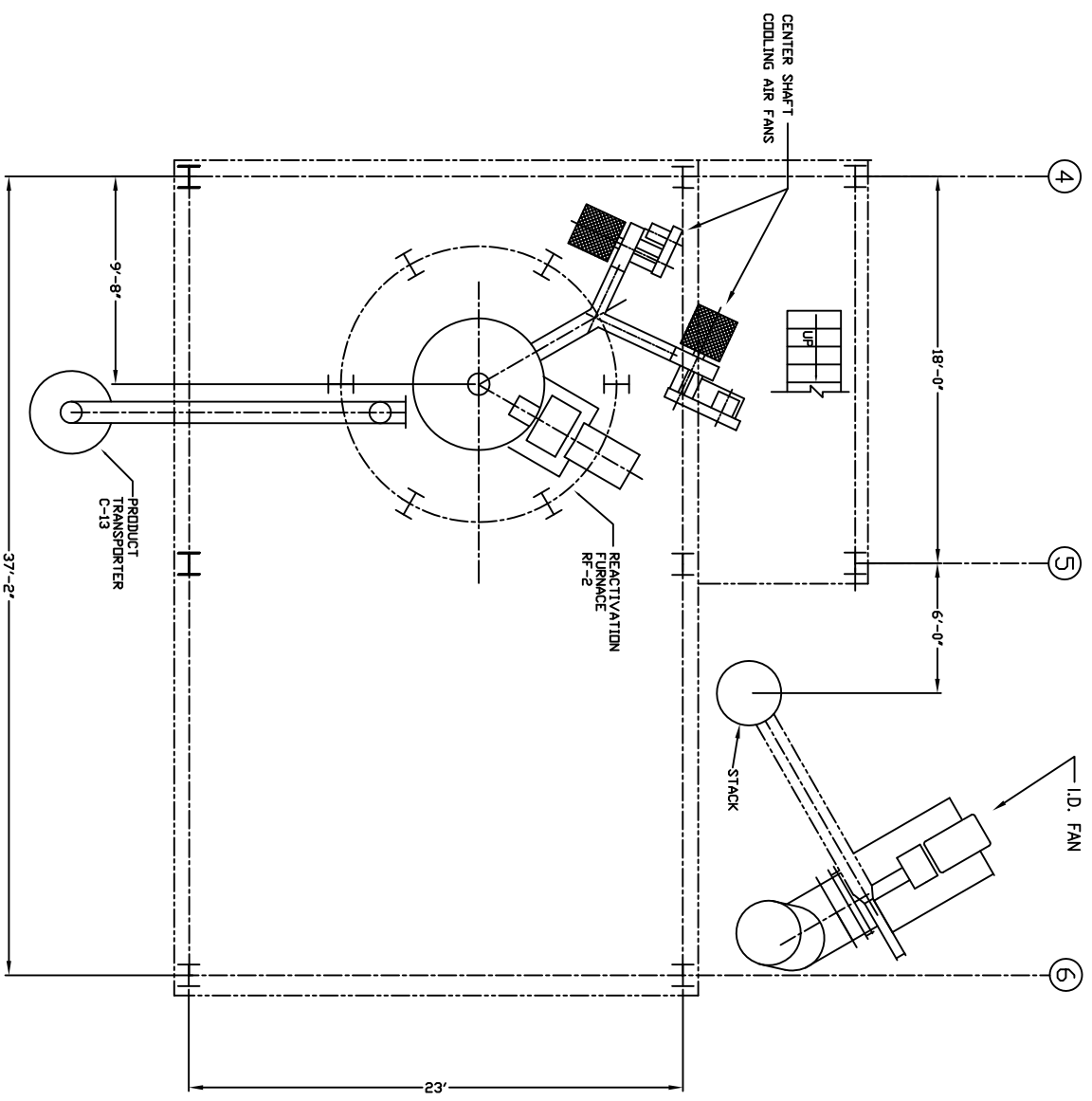
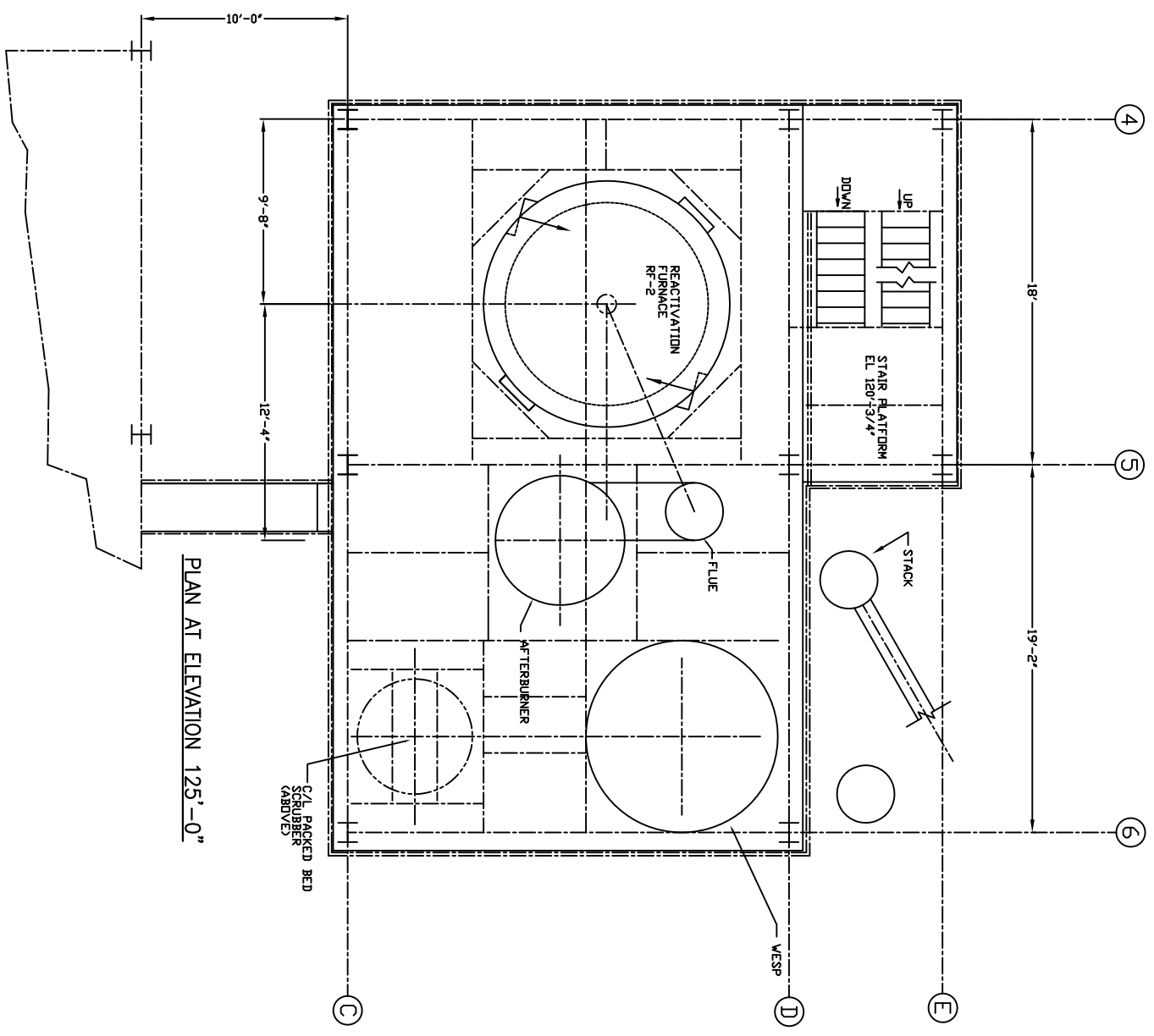


- NOTES:**
- THIS DRAWING INCLUDES COMPONENTS OF THE FACILITY THAT ARE EXEMPT FROM PERMITTING UNDER VARIOUS PROVISIONS OF RCRA. DATA RELATED TO THESE COMPONENTS IS PROVIDED FOR INFORMATIONAL PURPOSES AND EASE OF REVIEW ONLY, AND THEY ARE NOT INTENDED TO BECOME REGULATED COMPONENTS OF THE HAZARDOUS WASTE FACILITY.
 - THIS DRAWING IS BASED ON PARKER FACILITY DRAWING 01-32-002P

1	JBE	KEM	NAME CHANGED TO SIEMENS INDUSTRY	3/15/12
NO.	BY	CHK'D	APPROVED	DATE
REVISIONS				
CBE CHAVOND-BARRY ENGINEERING CORP.				
400 Route 518 • P.O. Box 205 • Bloomington, New Jersey 08504				
SIEMENS INDUSTRY, INC.				
2523 MUTAHAR STREET, PARKER, AZ 85344				
SITE CONTOUR MAP				
DRAWN		CHECKED		APPROVED
DATE		DATE		DATE
JBE	1/25/07	KEM	1/25/07	
SCALE	DWG. NO.		REV.	
AS SHOWN	1541-CM-001		1	

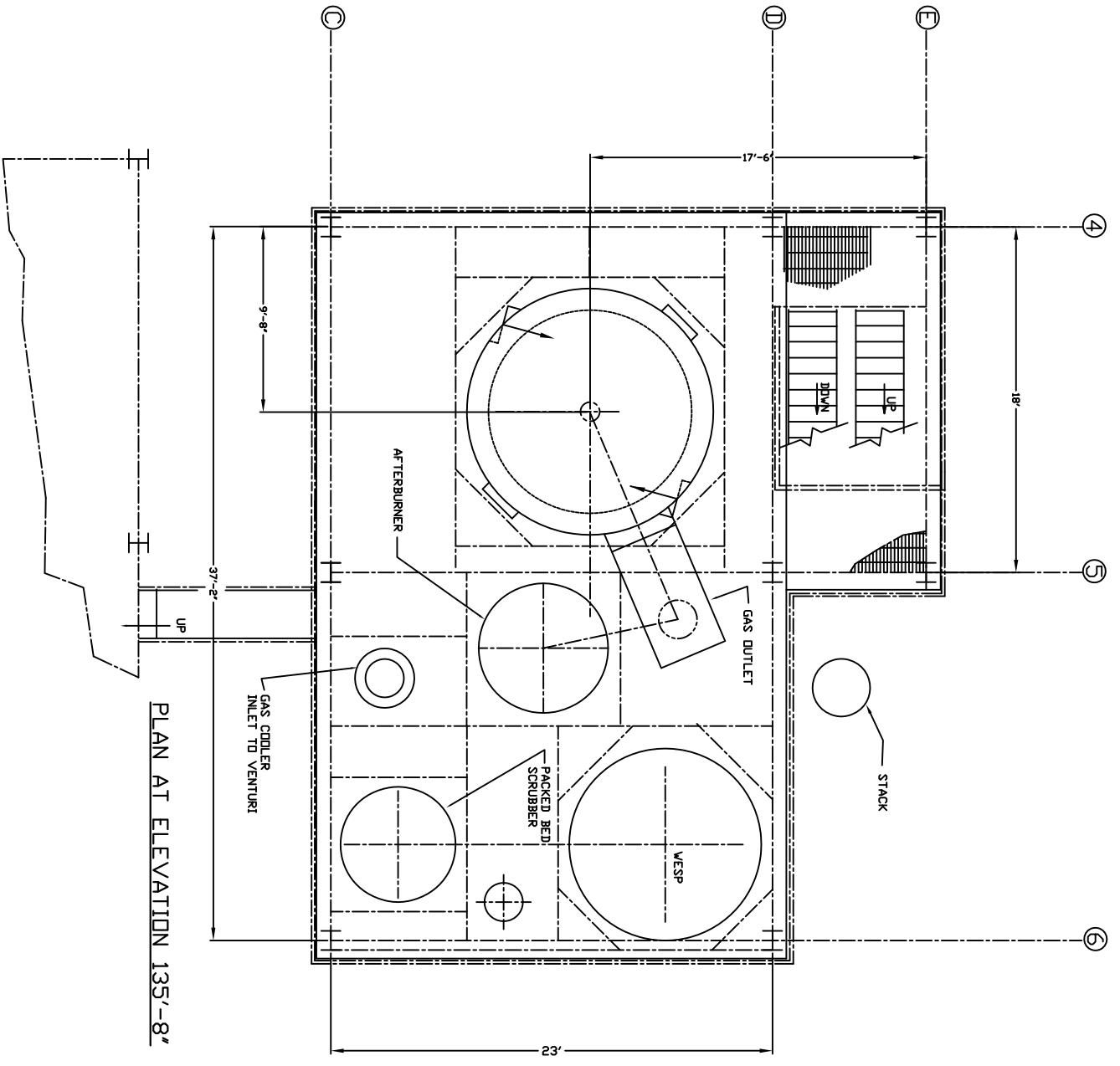
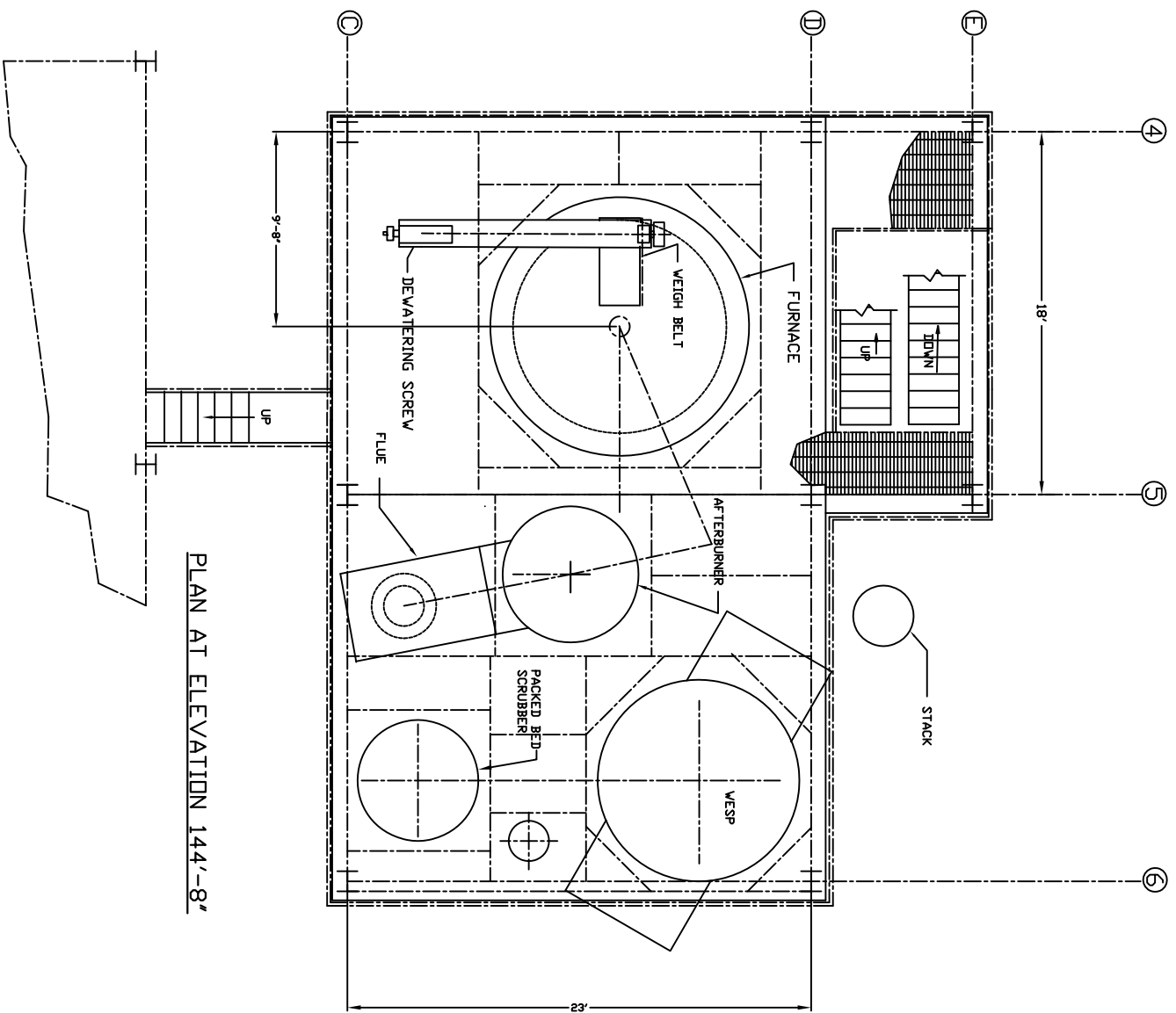
THIS PRINT AND ALL INFORMATION HEREON IS THE PROPERTY OF THE CHAVOND-BARRY ENGINEERING CORPORATION AND IS SUBJECT TO RETURN UPON DEMAND. IT IS NOT TO BE MADE PUBLIC OR COPIED UNLESS AUTHORIZED BY THE ABOVE COMPANY. ALL RIGHTS TO PATENTABLE DESIGN OR INVENTION ARE RESERVED.

PLANT NORTH



- NOTES:
- THIS DRAWING INCLUDES COMPONENTS OF THE FACILITY THAT ARE EXEMPT FROM PERMITTING UNDER VARIOUS PROVISIONS OF RCRA. DATA RELATED TO THESE COMPONENTS IS PROVIDED FOR INFORMATIONAL PURPOSES AND EASE OF REVIEW ONLY, AND THEY ARE NOT INTENDED TO BECOME REGULATED COMPONENTS OF THE HAZARDOUS WASTE FACILITY.

1	JBE	KEM	NAME CHANGED TO SIEMENS INDUSTRY	3/15/12
NO.	DWN.	CK'D.	APP.	DATE
REVISIONS:				
CBE CHAYOND-BARRY ENGINEERING CORP. 400 Route 318 • P.O. Box 205 • Blawenburg, New Jersey 08504 SIEMENS INDUSTRY, INC. 2523 MUTAHAR STREET, PARKER, AZ 85344 CARBON REGENERATION SYSTEM				
PLAN VIEWS				
DRAWN		CHECKED		APPROVED
DATE	DATE	DATE	DATE	DATE
CPG 5/12/94	KEM 5/13/94			
SCALE 1/4"=1'-0"		DWG. NO. 1478-P-001		REV. 1



- NOTES:
- THIS DRAWING INCLUDES COMPONENTS OF THE FACILITY THAT ARE EXEMPT FROM PERMITTING UNDER VARIOUS PROVISIONS OF RCRA. DATA RELATED TO THESE COMPONENTS IS PROVIDED FOR INFORMATIONAL PURPOSES AND EASE OF REVIEW ONLY, AND THEY ARE NOT INTENDED TO BECOME REGULATED COMPONENTS OF THE HAZARDOUS WASTE FACILITY.

NO.	DATE	BY	APP.	REVISIONS	DATE
1	5/12/94	KEH	APP	NAME CHANGED TO SIEMENS INDUSTRY	3/15/12

CBE CHAVOND - BARRY ENGINEERING CORP.
 400 Route 518 • P.O. Box 285 • Blairstown, New Jersey 08504

SIEMENS INDUSTRY, INC.
 2523 MUTAHAR STREET, PARKER, AZ 85344
 CARBON REGENERATION SYSTEM

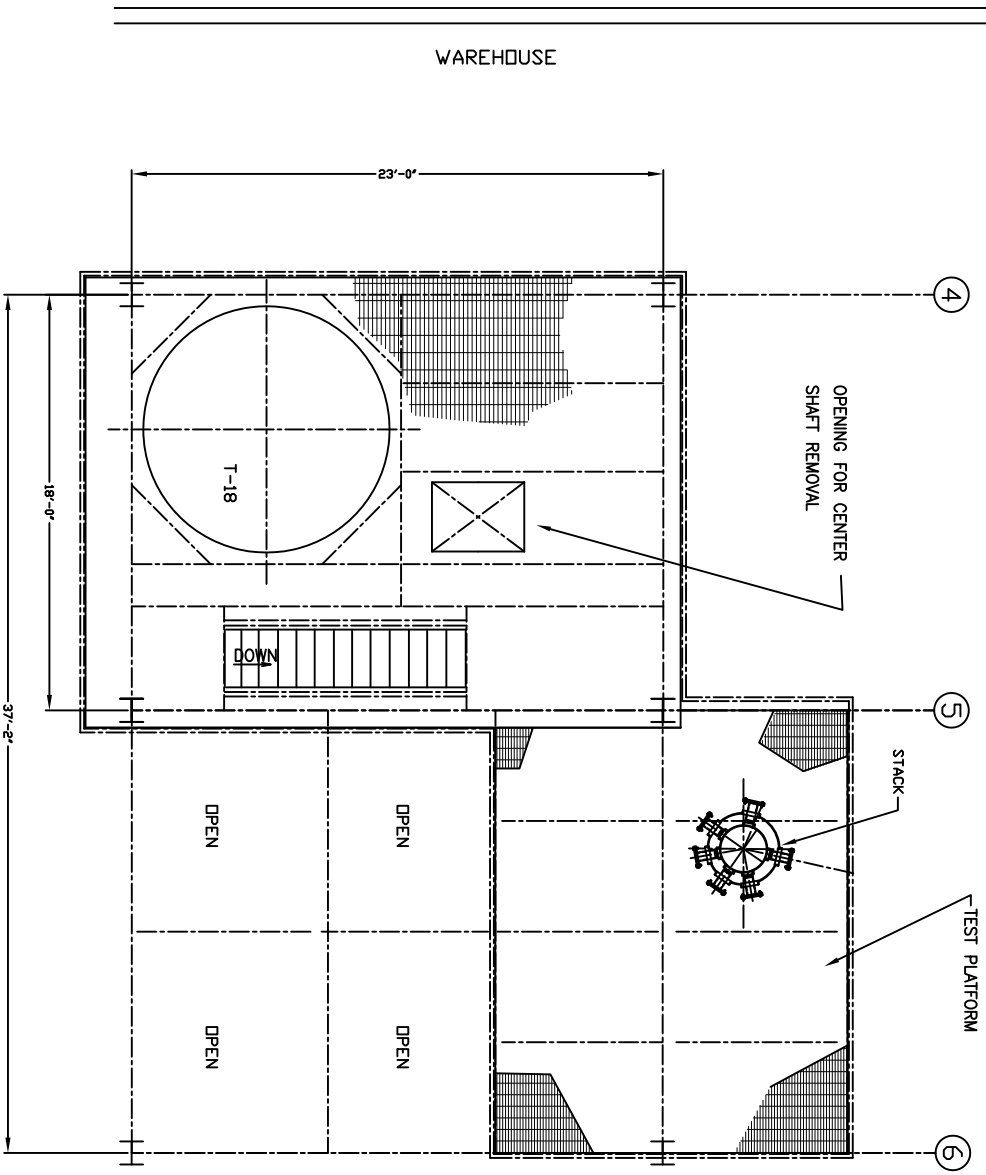
DATE	CHECKED	DATE	APPROVED	DATE
5/12/94	KEH	5/13/94		

SCALE: 1/4"=1'-0"

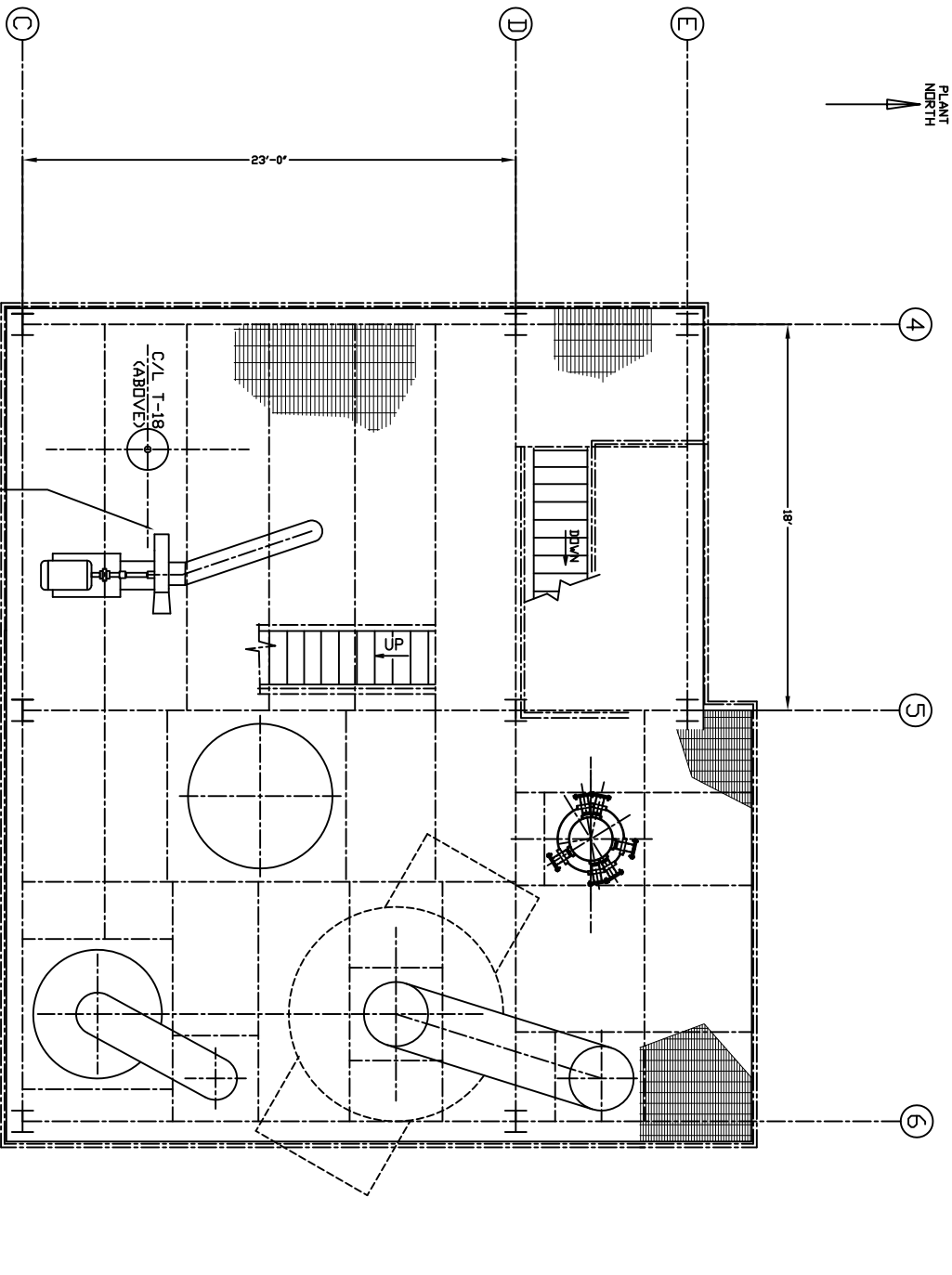
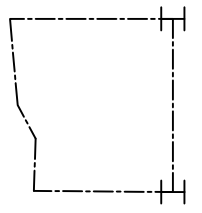
DWG. NO. 1478-P-002

REV. 1

THIS PRINT AND ALL INFORMATION THERE ON IS THE PROPERTY OF THE CHAVOND-BARRY ENGINEERING CORPORATION AND IS SUBJECT TO RETURN UPON DEMAND. IT IS NOT TO BE MADE PUBLIC OR COPIED UNLESS AUTHORIZED BY THE ABOVE COMPANY. ALL RIGHTS TO PATENTABLE DESIGN OR INVENTION ARE RESERVED.

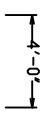


PLAN AT T.O.G. ELEVATION 169'-2"



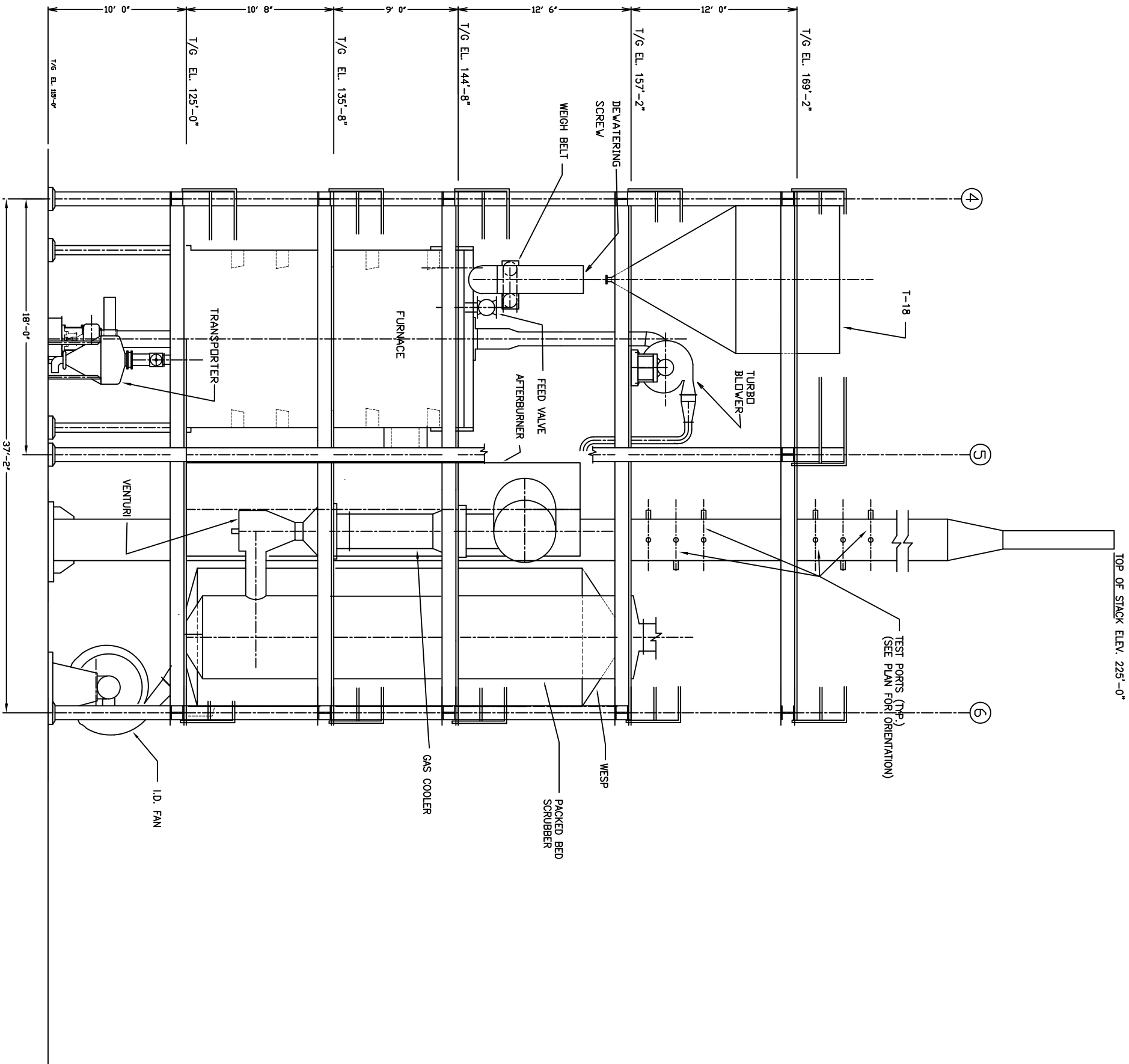
PLAN AT T.O.G. ELEVATION 157'-2"

- NOTES:
- THIS DRAWING INCLUDES COMPONENTS OF THE FACILITY THAT ARE EXEMPT FROM PERMITTING UNDER VARIOUS PROVISIONS OF RCRA. DATA RELATED TO THESE COMPONENTS IS PROVIDED FOR INFORMATIONAL PURPOSES AND EASE OF REVIEW ONLY, AND THEY ARE NOT INTENDED TO BECOME REGULATED COMPONENTS OF THE HAZARDOUS WASTE FACILITY.



NO	JOB	KEY	APP	NAME	CHANGED TO	SIEMENS INDUSTRY	DATE
1	DWN	CK'D	APP	REVISIONS			3/15/12
CBE CHAVOND-BARRY ENGINEERING CORP. 400 Route 518 • P.O. Box 205 • Blawenburg, New Jersey 08504 SIEMENS INDUSTRY, INC. 2523 WUTAHAR STREET, PARKER, AZ 85344 CARBON REGENERATION SYSTEM							

PLAN VIEWS			
DRAWN	DATE	CHECKED	DATE
CPG	5/12/94	KEM	5/13/94
SCALE	DWG. NO.	REV.	DATE
1/4"=1'-0"	1478-P-003	1	

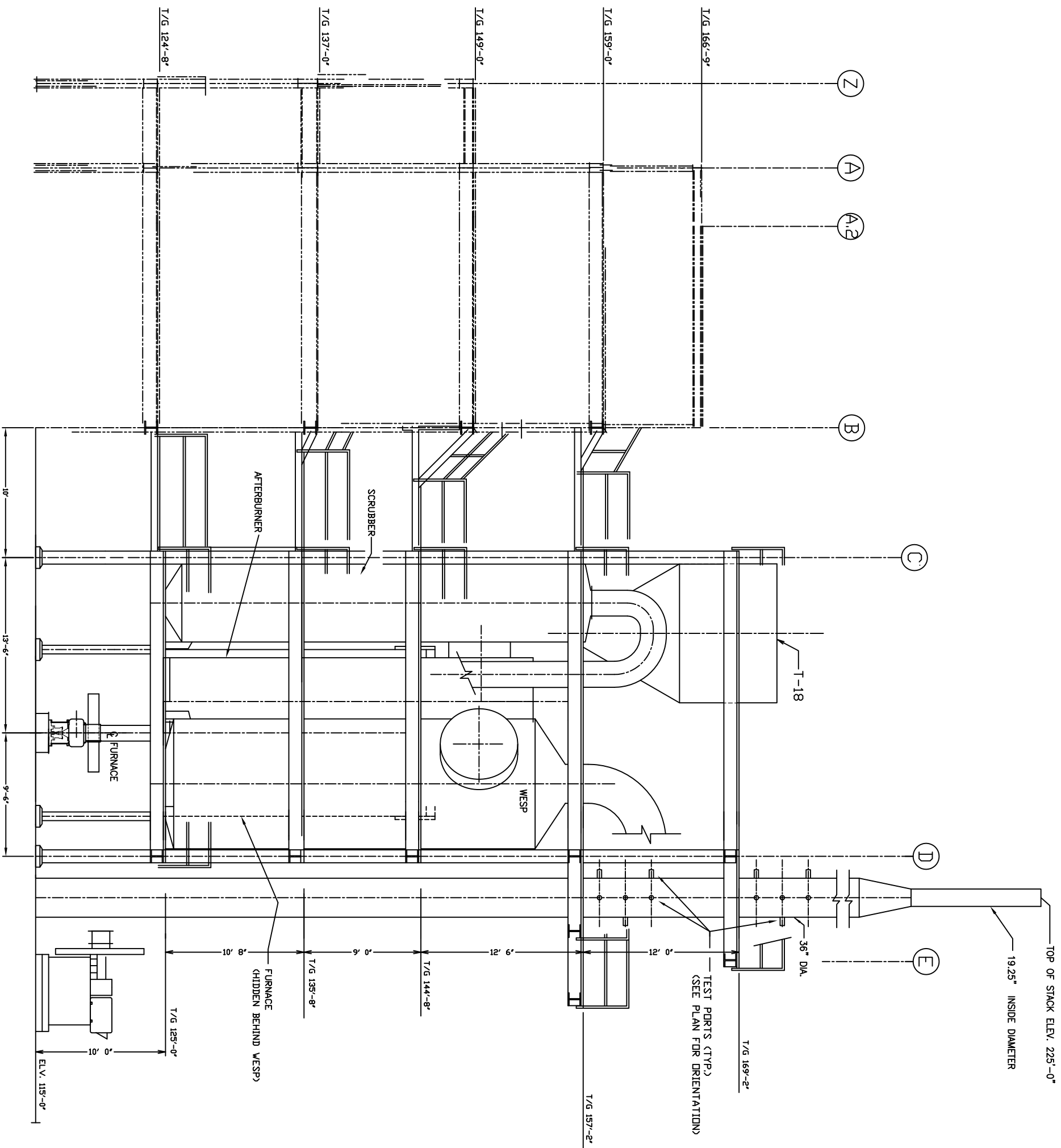


- NOTES:
1. THIS DRAWING INCLUDES COMPONENTS OF THE FACILITY THAT ARE EXEMPT FROM PERMITTING UNDER VARIOUS PROVISIONS OF RCRA. DATA RELATED TO THESE COMPONENTS IS PROVIDED FOR INFORMATIONAL PURPOSES AND EASE OF REVIEW ONLY, AND THEY ARE NOT INTENDED TO BECOME REGULATED COMPONENTS OF THE HAZARDOUS WASTE FACILITY.
 2. FOR ACTUAL ELEVATIONS ADD 327 FEET TO THE ELEVATIONS SHOWN.

1	JBE	KEM	APP	NAME CHANGED TO SIEMENS INDUSTRY	3/15/12
	NO	OWN		REVISIONS	DATE
CBE CHAVOND-BARRY ENGINEERING CORP. 400 Route 518 • P.O. Box 205 • Biberburg, New Jersey 08504 SIEMENS INDUSTRY, INC. 2523 MUTAHAR STREET, PARKER, AZ 85344 CARBON REGENERATION SYSTEM					
ELEVATION LOOKING NORTH					

DRAWN	DATE	CHECKED	DATE	APPROVED	DATE
CPG	5/12/94	KEM	5/13/94		
SCALE	1/4"=1'-0"		DWG. NO.	1478-P-004	
				REV.	1

THIS PRINT AND ALL INFORMATION THEREON IS THE PROPERTY OF THE CHAVOND-BARRY ENGINEERING CORPORATION AND IS SUBJECT TO RETURN UPON DEMAND. IT IS NOT TO BE MADE PUBLIC OR COPIED UNLESS AUTHORIZED BY THE ABOVE COMPANY. ALL RIGHTS TO PATENTABLE DESIGN OR INVENTION ARE RESERVED.



- NOTES:
1. THIS DRAWING INCLUDES COMPONENTS OF THE FACILITY THAT ARE EXEMPT FROM PERMITTING UNDER VARIOUS PROVISIONS OF RCRA. DATA RELATED TO THESE COMPONENTS IS PROVIDED FOR INFORMATIONAL PURPOSES AND EASE OF REVIEW ONLY, AND THEY ARE NOT INTENDED TO BECOME REGULATED COMPONENTS OF THE HAZARDOUS WASTE FACILITY.
 2. STAIRS ALONG THE SIDE OF THE SUPPORT STRUCTURES HAVE BEEN OMITTED FOR DRAWING CLARITY.
 3. FOR ACTUAL ELEVATIONS ADD 327 FEET TO THE ELEVATIONS SHOWN.

1	JBE	KEM	NAME CHANGED TO SIEMENS INDUSTRY	3/15/12
N0	DWN	CK'D	REVISIONS	DATE
CBE CHAVOND-BARRY ENGINEERING CORP. 400 Route 518 • P.O. Box 205 • Blairstown, New Jersey 08504 SIEMENS INDUSTRY, INC. 2523 MUTAHAR STREET, PARKER, AZ 85344 CARBON REGENERATION SYSTEM				
ELEVATION LOOKING WEST				
DRAWN		CHECKED		APPROVED
CPG	5/12/94	KEM	5/13/94	
SCALE	DWG. NO.		1478-P-005	REV.
1/4" = 1'-0"				1

THIS PRINT AND ALL INFORMATION THERE ON IS THE PROPERTY OF THE CHAVOND-BARRY ENGINEERING CORPORATION AND IS SUBJECT TO RETURN UPON DEMAND. IT IS NOT TO BE MADE PUBLIC OR COPIED UNLESS AUTHORIZED BY THE ABOVE COMPANY. ALL RIGHTS TO PATENTABLE DESIGN OR INVENTION ARE RESERVED.